



For more information please contact  
us at [GNBEUScholarship@gmail.com](mailto:GNBEUScholarship@gmail.com)

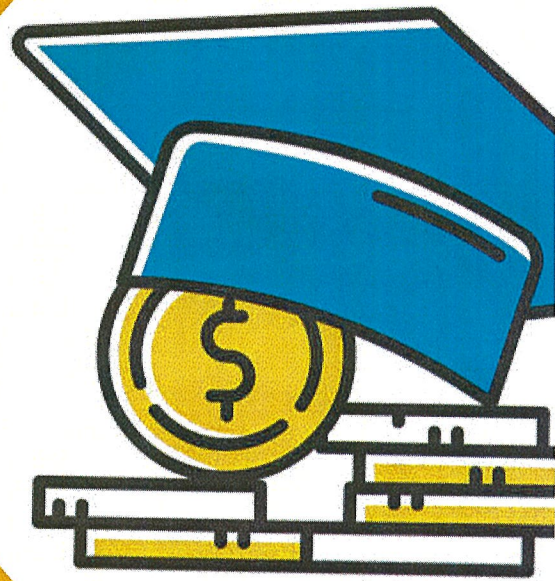
# **GREATER NEW BEDFORD EDUCATORS UNION SCHOLARSHIP**

## **SCHOLARSHIP OPPORTUNITIES**

- **GNB STUDENT SCHOLARSHIP -  
3 \$300 SCHOLARSHIPS**
- **GNBEU MEMBER SCHOLARSHIPS  
- 4 \$500 SCHOLARSHIPS**

## **APPLY TODAY!**

**APPLICATIONS DUE  
ON MARCH 13, 2026**



**GNBEU MEMBER  
SCHOLARSHIP**



**GNB STUDENT  
SCHOLARSHIP**

# Greater New Bedford Educators Union Scholarship

## GNBVT Student Scholarship

Starting in 2022, the GNBEU Membership Scholarship Program has worked tirelessly to provide union families with monetary assistance for post-secondary education. GNBEU students will benefit from our commitment to higher education.

This scholarship aims to provide four \$300 scholarships to graduating seniors of GNBVT in the class of 2026 who plan to attend a 2- or 4-year post-secondary institution or attend a trade school upon graduation.

Applicants must submit completed applications using the Google Form linked below.

Applicants should provide the following information:

- 1 letter of recommendation
- A resume including
  - Work experience
  - Community involvement
  - Extracurricular activities
  - Achievements and awards
- A personal statement explaining how this scholarship will help further your academic and career goals.

**All applications are due by March 13, 2026.**

### [GNBEU GNB Student Scholarship 2025-2026](#)

#### **Additional Requirements and Information**

- In order to ensure funds are fairly and equitably distributed, students may receive **either** the GNBEU Member Scholarship **or** the GNBEU Student Scholarship. In the event that a student applies to and is selected for both, they will receive the scholarship of the larger sum.
- All scholarships are subject to successful completion of college coursework. Students must submit an unofficial transcript by February 1, 2027 to receive funds. Students must maintain grades above a C to be eligible to receive the funds.
- Students may apply for this scholarship for subsequent school years. Students must re-apply for this scholarship annually in order to be eligible for consideration.

# Greater New Bedford Educators Union Scholarship

## GNBEU Member Scholarship

Started in 2022, the GNBEU Membership Scholarship Program has worked tirelessly to provide union families monetary assistance for post-secondary education. GNBEU members' students will benefit from our commitment to higher education.

The goal of this scholarship is to provide four \$500 scholarships to a senior graduating or currently enrolled in college (2 or 4 year undergraduate program). Qualified applicants must be related to a GNBEU\* or GNBAU\* member in good standing.

*\*Parent, sibling, grandparent, aunt or uncle must be a member of the GNBEU or GNBAU (Name, department and unit)*

### **Applicants must submit completed applications using the Google Form linked below.**

Applicants should provide the following information:

- 1 letter of recommendation
- A resume including
  - Work experience
  - Community involvement
  - Extracurricular activities
  - Achievements and awards
- A personal statement explaining how this scholarship will help further your academic and career goals.

**All applications are due by March 13, 2026.**

**[GNBEU Member Scholarship 2025-2026](#)**

### **Additional Requirements and Information**

- In order to ensure funds are fairly and equitably distributed, students may receive **either** the GNBEU Member Scholarship **or** the GNBEU Student Scholarship. In the event that a student applies to and is selected for both, they will receive the scholarship of the larger sum.
- All scholarships are subject to successful completion of college coursework. Students must submit an unofficial transcript by February 1, 2027 to receive funds. Students must maintain grades above a C to be eligible to receive the funds.
- Students may apply for this scholarship for subsequent school years. Students must re-apply for this scholarship annually in order to be eligible for consideration.