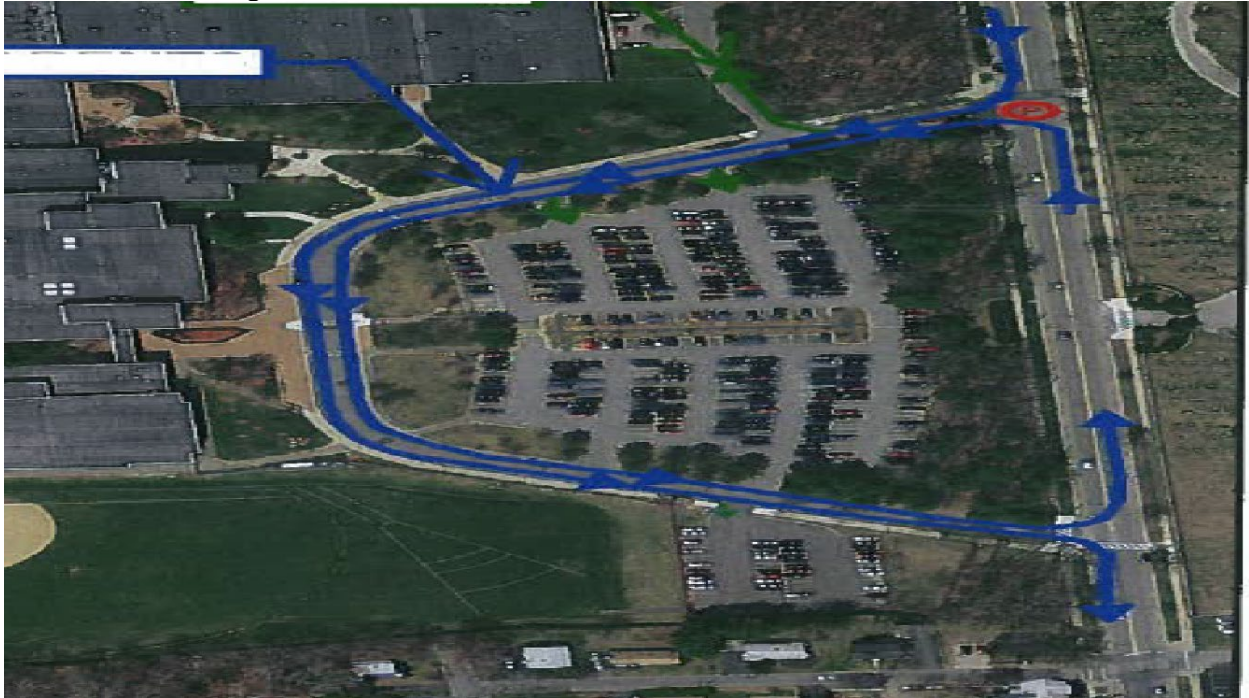


Message from Assistant Principal's Office

Dear Parents and Guardians,

Morning Drop-off:

- All parents dropping off their child must drop them off in the “horseshoe” in front of the building and NEVER IN THE PARKING LOT.
- Follow all signs.



Pick-up:

- Entry into driveway for student pick-up is not allowed between 2:00-2:45p.m. unless you are dismissing a student. Pick up in the rear of the school is not allowed.
- All pick-ups must be done on Ashley Blvd.

Bussing:

- Bus routes are final and bus stops will not be added to bus routes.
- If your child has a disability, and requires accommodations, please call Erin Ptaszinski at ext. 700.
- Once students are issued an ID, they must wear it onto the bus to gain access.
- Once a student has an established bus stop, they will not be able to ride on another bus unless they bring a parent/guardian note or a parent/guardian call is made to confirm the bus change with Mrs. Martin (Security Dept. Administrative Assistant).

Matthew Silva

Assistant Principal of grades 9-10
Director of Security
508-998-3321 ext. 381

Derek Medeiros

Assistant Principal of grades 11-12
Director of Security
508-998-3321 ext. 277

Reviewed 07/30/2024