

# Greater New Bedford Regional Vocational Technical High School

**12/14/2020**

1121 Ashley Blvd.  
New Bedford, MA 02745  
(508) 998-3321  
www.gnbvt.edu

*Good afternoon GNBVT families,*

*We continue to thank all families for supporting GNB Voc-Tech and the education of your children during this challenging time. As the Covid-19 pandemic continues to challenge all of us, it is more important than ever for us to follow all safety protocols, wear a mask, and practice social distancing.*

*Michael P. Watson & Robert J. Watt*

## **THIS WEEK'S SCHEDULE**

Cycle 10 ends Tuesday  
Cycle 11 begins Wednesday

Monday - Day 5  
Tuesday - Day 6  
Wednesday - Day 1  
Thursday - Day 2  
Friday - Day 3

### **Trimester 1 Grades are closing!**

Please speak with your teachers and stay with them for asynchronous sessions if you have any outstanding Trimester 1 work that needs to be completed.

Grade 9: December 11th  
Grades 10-12: December 15th  
Report Cards posted to portal on  
December 23rd.

### **January 2021 Changes to In-Person Learning Schedule**

The 9-2 Freshmen students will receive their permanent shop placements on December 21st (Cycle 11, Day 4). These students will report to the fieldhouse at 7:30am and then be escorted to their permanent CVTE area and remain there for the remainder of the cycle (Days 4, 5, 6) through December 23rd.

The 9-1 Freshmen students will receive their permanent shop placements through the mail (and will be posted to Aspen after 12:00pm on December 23rd). These students will report to their permanent CVTE area on January 4th when school reopens from the December recess and remain there for the entire cycle (Days 1 - 6) through January 11th.

On January 12 (Cycle 13) all freshmen students will begin their green and gold cohorts. Beginning January 12th, all junior students will report all six days for in-person CVTE instruction. Freshmen and Sophomore students will report using the green/gold cohort models.

Of course, this schedule transition remains subject to potential changes as we manage the Covid-19 pandemic with state and local officials.

We wanted the school community to be aware of the planned changes for January and adjustments will be made based upon the changing pandemic.



## **January 2021 Changes to Remote Synchronous Learning Classes**

Students are reminded that they must be in every class. Missing the class period but submitting classwork is not permitted. School attendance is mandatory and reported to the Department of Elementary and Secondary Education, regardless of whether the class is held in-person or remotely. It must accurately reflect student learning experiences.

Unexcused absences for live (synchronous) remote sessions will reflect negatively on students' synchronous learning assignment grades. Beginning in Trimester 2, students who do not attend a synchronous, live class and have their absence noted as unexcused will have their grades for submitted assignments penalized. More information will be forthcoming.

## **January 2021 Changes to Remote Asynchronous Academic Learning Schedule**

Beginning January 4th, any student who received a failing grade in a course for Trimester 1 will be required to attend the asynchronous learning session for that class period.

It is our goal to ensure that all students receive the support that they need to meet with success in each and every academic class to ensure they meet local district requirements at the end of the year. The Department of Elementary and Secondary Education has been clear with school districts that grades are to be issued to all students. If students are not meeting the passing requirements for their courses, we all share a collective responsibility (parents, students, teachers, and administrators) to provide the support needed to ensure their academic success.

## **MCAS Assessments for the Class 2022 (ALL JUNIORS)**

MCAS assessments for Junior class students scheduled for January 2021-February 2021 have been postponed by the Department of Elementary and Secondary Education. As more information becomes available, we will communicate with families and students.

## December 23, 2020 - Half Day

Next Wednesday, December 23rd, is the day before the holiday recess. It will be Cycle 11, Day 6. This day is a half-day of school with dismissal at 10:50am. There will be no lunch served.

Students scheduled for in-person CVTE learning will report as scheduled and be dismissed at 10:50am. Students scheduled for remote CVTE learning will follow the same schedule.

Students in Academics will have a slightly altered schedule to accommodate the half day. Classes will run as follows:

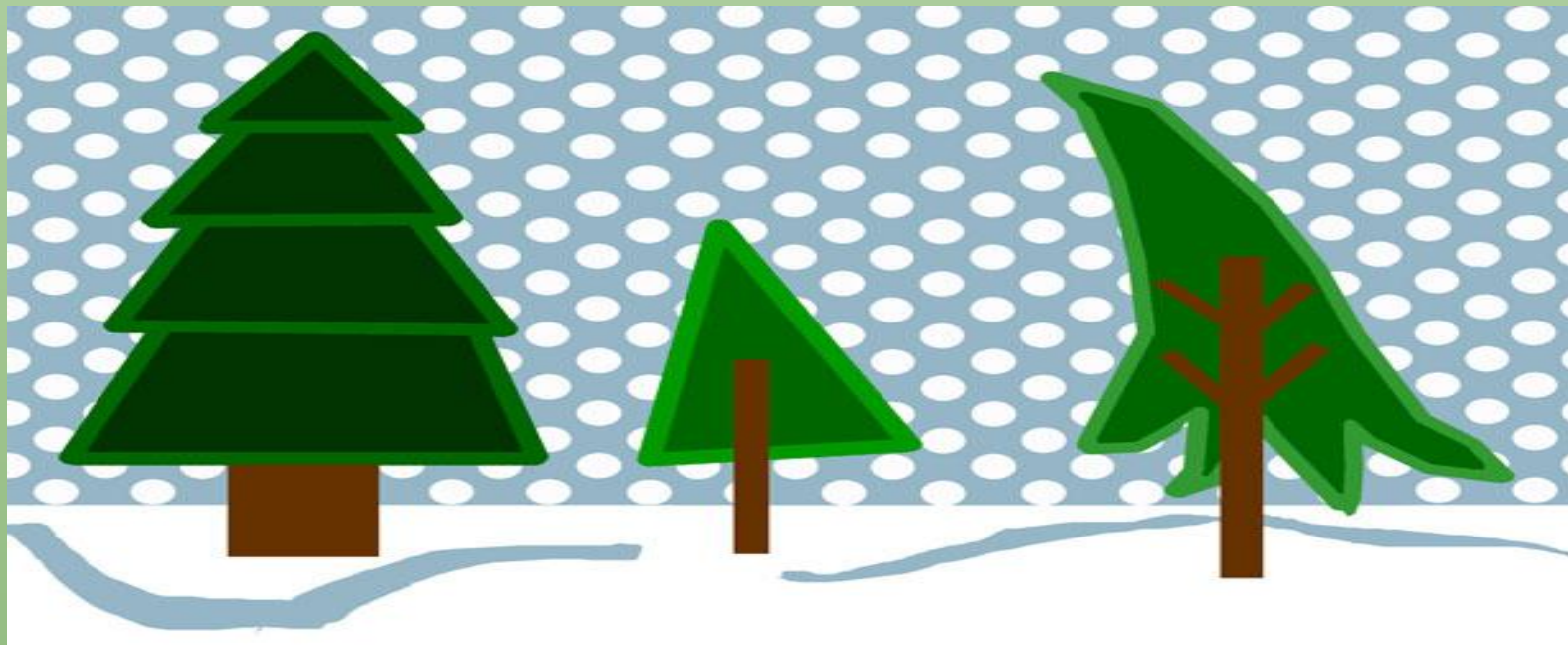
**7:40am - 8:40am - Block 4**  
**8:45am - 9:45am - Block 5**  
**9:50am - 10:50am - Block 6**

There will be NO support sessions offered on this day in the afternoon. All faculty and staff will be dismissed at 11:15am.



### Bus Routes

The capacity of students riding the bus to school has been impacted by the Covid-19 pandemic. The bus routes are posted to the school website.



# WINTER SPORTS

An email was sent out last Friday to all registered student-athletes and parents with details of how student-athletes will enter the Field House and Hetland Arena for their tryouts. If you have not received this email there is an issue with your registration or physical. DO NOT REPORT FOR YOUR TRYOUT UNLESS YOU HAVE RECEIVED THE CONFIRMATION EMAIL. If you believe you have registered and supplied all medical information and did not receive confirmation, please email Mr. Methia: [ryan.methia@gnbvt.edu](mailto:ryan.methia@gnbvt.edu)

## Girls' Basketball (at GNB Field House)

Monday, 12/14 & Wednesday, 12/16: 3:00pm-4:30pm for Freshmen, JV & Varsity  
Friday, 12/18: 3:00pm-4:30pm for Freshmen, JV & Varsity

## Boys' Basketball (at GNB Field House)

Tuesday, 12/15 & Thursday, 12/17: 3:00pm-4:30pm for Freshmen  
Tuesday, 12/15 & Thursday, 12/17: 4:45pm-6:15pm for JV & Varsity  
Friday, 12/18: 4:45pm-6:15pm for Freshmen, JV & Varsity

## Hockey (at Hetland Arena)

Monday, 12/14, Tuesday, 12/15 & Thursday 12/17: 8:30pm-9:30pm

## IMPORTANT INFORMATION!

Due to busing restrictions and logistics there will be NO transportation provided after tryouts or practices this winter season. All student athletes will need transportation immediately after their tryout times. Students should arrive no earlier than 10 minutes before their scheduled start time. Students that are scheduled for the 4:45pm and 6:15pm time slots are to leave campus and be transported back at the appropriate time.

Locker rooms will not be open throughout the winter season. Students coming to tryouts from home need to arrive ready to practice. Students that have in-person learning and are scheduled for the 3:00pm time slot will be allowed to change for tryouts in shop with the permission of their teachers. All student athletes need to bring their own gym bag that has the following items:

- Extra mask (masks can NOT have vents)
- Drinking water
- Personal belongings
- Medications
- Hand Sanitizer



## **Remote Learning and Student Expectations**

**Important Reminder: Students are reminded that their camera and microphone (unless directed otherwise by the instructor) must be on during remote sessions, complete all assignments, check emails from teachers for attendance requirements during support sessions, and request any support they need to meet with success in all of their classes. Students are expected to be present for entire class periods. During the asynchronous (independent learning time), students should be completing all assignments in preparation for the next scheduled, synchronous (live) class time. It is important that all students are prepared for class periods and by completing these assignments will provide teachers with the information they need to ensure positive student learning outcomes.**

We need to remind students given circumstances that have already appeared in other districts that we will strictly prohibit screenshots, pictures, audio/video recording without prior consent of the teachers and classmates. It is illegal in Massachusetts to record another person through any medium without their consent. Recordings, as well as any form of online bullying or harassment will be handled as a discipline matter any may result in suspension, expulsion and/or police involvement.

Students are reminded of the district expectations, [District Expectations](#), and thanked for their continued best efforts.

### **Breakfast/Lunch**

Starting November 2nd, all students are eligible to participate in the Seamless Summer Option (SSO) USDA meals program that is available until June 30th or until the funding is not available.

Remote students will now have the opportunity to order meals for the days that they are learning remotely with 2 different pick up days (Tuesdays & Thursdays both 9am-10am). Links for the remote ordering will be on the school website.

If at any time the district has to switch back to a paid program, families that feel they are eligible for either free or reduced meal pricing can visit [www.myschoolapps.com](http://www.myschoolapps.com) to complete an application. If you have already been notified of your status from direct certification, an application does not need to be completed.

For cash free transactions, families can establish an account with your student's ID number to put money on their account to scan their ID at checkout by using [www.myschoolbucks.com](http://www.myschoolbucks.com)

# ***Please stay home if you are sick!***

We are asking our students to stay home if they are ill. This will help to minimize the incident rates of the common cold, flu and Covid-19. If your student is experiencing any of the following, please keep them home and inform the GNBVT Nurses Office at Ext. 204 or 205:

- Fever 100 and over
- Chills/shaking chills
- Headache when in combination w/other symptoms
- Cough (not due to other known cause, such as chronic cough)
- Muscle aches or body aches
- Difficulty breathing
- Nausea, vomiting, diarrhea
- New loss of smell or taste
- Fatigue when in combination w/other symptoms
- Sore Throat
- Nasal congestion/runny nose (not due to other known causes/allergies) when in combination w/other symptoms

If your child is exhibiting any of the above symptoms, please keep your child home and call your physician. You will be required to provide medical documentation upon the return of school.

All Students in Massachusetts  
**MUST** have a Flu Shot by:  
December 31, 2020

Please submit documentation  
to the School Nurse  
508-998-3321 Ext. 204/205



**ATTENTION  
JUNIORS!**  
You must have a  
**MENINGOCOCCAL  
VACCINATION**  
on file in the  
nurses' office.

## **Student Travel to High Risk States**

All students and families are reminded that travel outside of Massachusetts to states deemed "High Risk" by the Commonwealth of Massachusetts, requires a 14-day quarantine or negative Covid-19 test that was administered up to 72 hours prior to your arrival to Massachusetts. Proof of Covid-19 test results must be provided to the school's Attendance Office-Ms. Nobrega Ext. 341

# Stop the Spread!

## Covid-19 Testing Sites - New Bedford

<https://www.mass.gov/info-details/stop-the-spread#new-bedford>

Provider	Testing Location	Testing Hours	Contact	Details
Greater New Bedford Community Health Center (All Languages)	874 Purchase Street	Mon-Fri: 8:30am to 11:30am	508-742-3807	Appointment Recommended
	Sister Rose's House 75 Division Street	Monday: 11am-2pm	508-996-0546	Walk-up
Seven Hills Behavioral Health (English, Spanish, Portuguese, Creole)	1183 Acushnet Ave Corner of Sawyer & Acushnet Ave	Tuesday: 1pm-4pm		Walk-up
	PAACA: 360 Coggeshall St	Wednesday: 11am-2pm		Walk-up
	Seabra's Food Mart: 41 Rockdale Ave.	Thursday: 11am-2pm		Walk-up
Boys & Girls Club of New Bedford	166 Jenney Street	Friday: 1pm-4pm	508-973-7131	
AFC Urgent Care	119 Coggeshall St.	Mon-Fri: 8am-8pm	508-990-1900	Appointment Needed
		Sat-Sun: 8am-5pm		

# 2020 - 2021 School Year Cycle Schedule

Freshmen, sophomores, juniors, and seniors are identified as follows:

Examples: Sue Jones 9-1 (9 = grade level, 1= division number and cycle reporting to academic / related classes). James Smith 11-2 (11= grade level, 2 = division number and cycle reporting to academic / related classes).

All odd numbered divisions will report to Academic and Related classes during the ODD Cycle.

All even numbered divisions will report to Academic and Related classes during the EVEN Cycle.

## 1<sup>ST</sup> TRIMESTER

### CYCLE 1

Sept. 16,17,18,  
21,22,23

### CYCLE 2

Sept. 24,25,28,  
29,30,Oct 1

### CYCLE 3

Oct. 2,5,6,  
7,8,9

### CYCLE 4

Oct. 13,14,15,  
16,19,20

### CYCLE 5

Oct. 21,22,23,  
26,27,28

### CYCLE 6

Oct. 29,30, Nov.  
2,3,4,5

### CYCLE 7

Nov. 6,9,10,  
12,13,16

### CYCLE 8

Nov. 17,18,19,  
20,23,24

### CYCLE 9

Nov. 25,30,Dec.1,  
2,3,7

### CYCLE 10

Dec. 8,9,10,  
11,14,15

## 2<sup>ND</sup> TRIMESTER

### CYCLE 11

Dec. 16,17,18  
21,22,23

### CYCLE 12

Jan. 4,5,6,  
7,8,11

### CYCLE 13

Jan. 12,13,14,  
15,19,20

### CYCLE 14

Jan. 21,22,25,  
26,27,28

### CYCLE 15

Jan. 29, Feb 1, 2,  
3,4,5

### CYCLE 16

Feb. 8,9,10,  
11,12,22

### CYCLE 17

Feb. 23,24,25,  
26,Mar 1,2

### CYCLE 18

Mar. 3,4,5,  
8,9,10

### CYCLE 19

Mar. 11,12,15,  
16,17,18

### CYCLE 20

Mar. 19,22,23,  
24,25,26

## 3<sup>RD</sup> TRIMESTER

### CYCLE 21

Mar. 29,30,31,  
April 1,5,6

### CYCLE 22

April. 7,8,9,  
12,13,14

### CYCLE 23

April 15,16,26,  
27,28,29

### CYCLE 24

April 30, May 3,4,  
5,6,7

### CYCLE 25

May 10,11,12,  
13,14,17

### CYCLE 26

May 18,19,20,  
21,24,25

### CYCLE 27

May 26,27,28,  
June 1, 2

### CYCLE 28

June 3,4,7,  
8,9

### CYCLE 29 – Finals Odd Cycle Day 1 & 4

June 10, 11

### CYCLE 30 – Finals Even Cycle Day 1&4

June 14,15



Aug./September 2020						
S	M	T	W	T	F	S
30	31	1	2	3	4	5
6	7	8	9	10	11	12
13	14	15	16	17	18	19
20	21	22	23	24	25	26
27	28	29	30			

October 2020						
S	M	T	W	T	F	S
				1	2	3
4	5	6	7	8	9	10
11	12	13	14	15	16	17
18	19	20	21	22	23	24
25	26	27	28	29	30	31

November 2020						
S	M	T	W	T	F	S
1	2	3	4	5	6	7
8	9	10	11	12	13	14
15	16	17	18	19	20	21
22	23	24	25	26	27	28
29	30					

December 2020						
S	M	T	W	T	F	S
		1	2	3	4	5
6	7	8	9	10	11	12
13	14	15	16	17	18	19
20	21	22	23	24	25	26
27	28	29	30	31		

January 2021						
S	M	T	W	T	F	S
					1	2
3	4	5	6	7	8	9
10	11	12	13	14	15	16
17	18	19	20	21	22	23
24	25	26	27	28	29	30
31						

February 2021						
S	M	T	W	T	F	S
	1	2	3	4	5	6
7	8	9	10	11	12	13
14	15	16	17	18	19	20
21	22	23	24	25	26	27
28						

March 2021						
S	M	T	W	T	F	S
	1	2	3	4	5	6
7	8	9	10	11	12	13
14	15	16	17	18	19	20
21	22	23	24	25	26	27
28	29	30	31			

April 2021						
S	M	T	W	T	F	S
				1	2	3
4	5	6	7	8	9	10
11	12	13	14	15	16	17
18	19	20	21	22	23	24
25	26	27	28	29	30	

May 2021						
S	M	T	W	T	F	S
						1
2	3	4	5	6	7	8
9	10	11	12	13	14	15
16	17	18	19	20	21	22
23	24	25	26	27	28	29
30	31					

June 2021						
S	M	T	W	T	F	S
		1	2	3	4	5
6	7	8	9	10	11	12
13	14	15	16	17	18	19
20	21	22	23	24	25	26
27	28	29	30			

IMPORTANT DATES	
September 16 - First Day of School	December 23rd - Early Release Day
September 7th - Labor Day (No school)	December 24th - January 1st - Vacation (No school)
October 12th - Columbus Day (No school)	January 18th - Martin Luther King Jr. Day (No school)
November 11th - Veterans' Day (No school)	February 15th - 19th - Vacation (No school)
November 22nd - Open House	March 26th - Trimester 2 ends
November 25th - Early Release Day	April 2nd - Good Friday (No school)
November 26th-27th - Thanksgiving (No School)	April 19th - 23rd - Vacation (No school)
December 4th - No school due to Open House	May 31st - Memorial Day (No school)
December 15th - Trimester 1 ends	June 15th - Last Day of School

